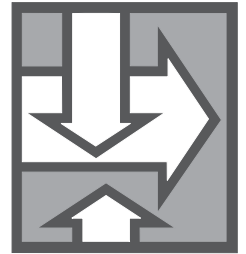


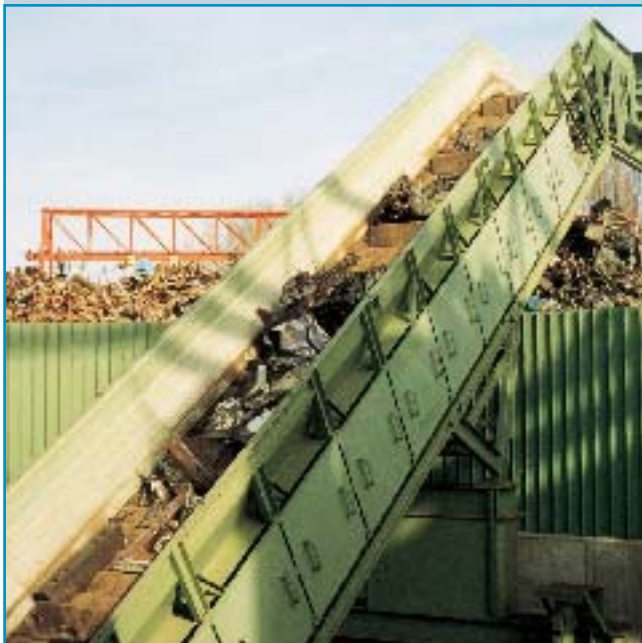
# STEEL BELT CONVEYORS FOR THE RECYCLING INDUSTRY



Solid waste processing



Ash handling



Scrap processing



Recycling facilities





# SCRAP PROCESSING CONVEYORS

... for the toughest requirements

*Infeed conveyor to a 5000hp shredder (UK)*



## The frame that supports the conveyors



Heavy duty structural steel construction throughout.

Rail for heavy loads and long service life.

Welded and braced spreaders maintain frame integrity.

Impact rails in all loading areas.

Curved sections feature heavy-duty, precision roll-formed tracks.

Removable tail cap section for ease of belt assembly.

Easily accessible belt take-up adjustments.

Drive and take-up sprockets ride on shouldered shafts for assured belt tracking.



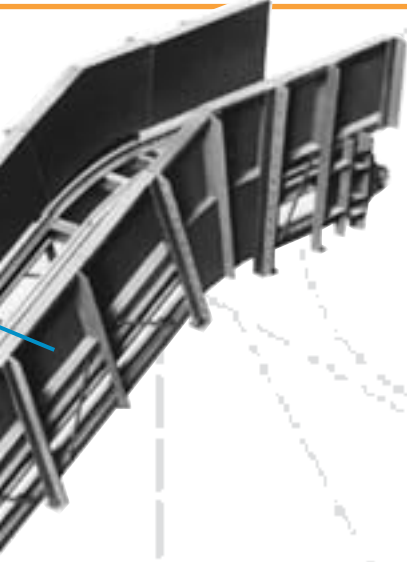
*Swivelling discharge conveyor from a 1000t scrap shear (Germany)*





# SOLID WASTE AND RECYCLING

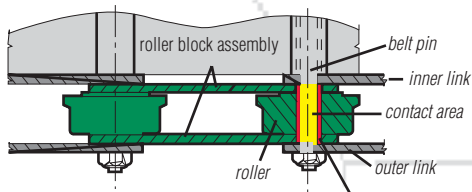
...conveyors for large volume handling



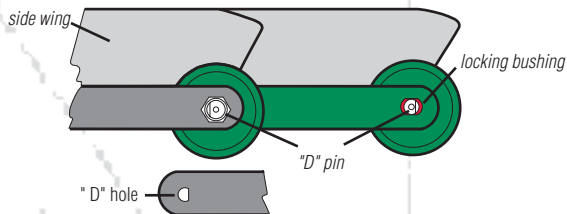
*Infeed conveyor to a municipal solid waste processing facility (UK)*



## Chain design is the key link to longevity



*Locking bushing is press fit into the roller block assembly. "D" holes in the outer link mate with "D" pins positive contact.*



### Reduced effects of relative motion - key in extending chain life

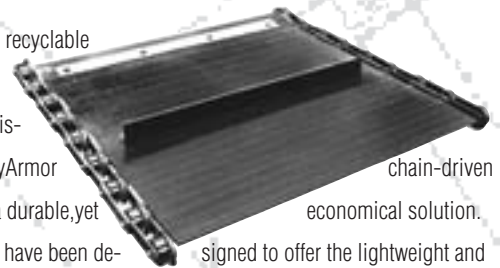
Relative motion and the related friction action that takes place at the joint between chain side bars and pins is the key factor causing chain wear. In fact, chain experts universally agree that joint pressures are inversely proportional to chain life. Many competitive chains are designed so that some relative motion can take place between the side bars and pins. This causes higher wear at the pin and chain links. Mayfran chains, however, are designed so that relative motion is avoided to minimize wear and increase chain life.



## PolyArmor belting

For moving recyclable materials over long distances, PolyArmor

chain-driven belts offer a durable, yet economical solution. These belts have been designed to offer the lightweight and low-friction advantages of synthetic belting - with excellent load carrying capacity and assured belt tracking.



*Infeed conveyor into a solid waste baling plant (USA)*

# ASH HANDLING CONVEYORS

... for high reliability demands

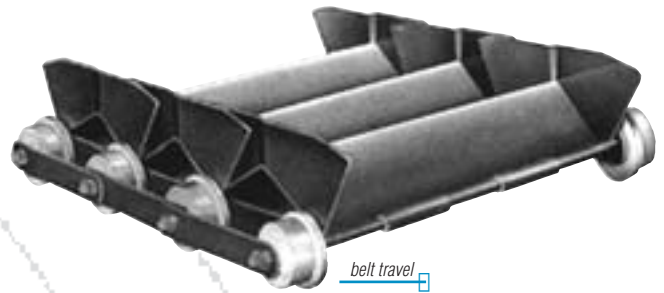


Ash discharge conveyor from 200tpd industrial waste incinerator (Austria)



## Heavy duty A-pan belt

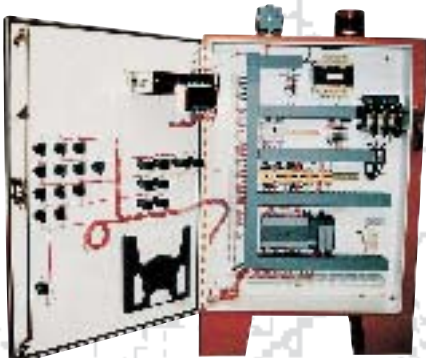
for toughest requirements and highest impact resistance.



## State-of-the-art controls

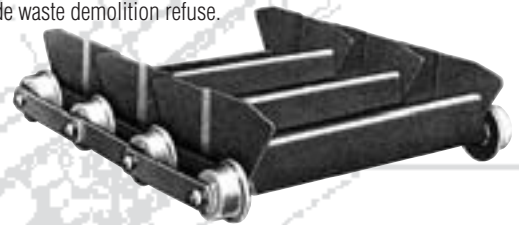


Can be provided according to specific customer requirements to be properly integrated in the overall plant control system.



## Overlapping Z-pan steel belts

These ruggedly designed belts offer ultimate performance for high impact, or unpredictable loading conditions for materials such as curbside waste demolition refuse.



## Double-beaded steel belting

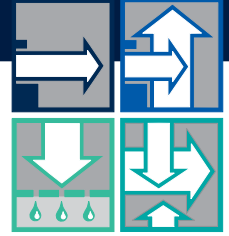


A common alternative for ash handling conveyors. Can be reinforced for better impact resistance.



Ash discharge conveyor from 100tpd industrial waste incinerator (The Netherlands)

# WORLDWIDE KNOW HOW ...



Three main engineering and manufacturing centers and an international network of subsidiaries and sales representatives ...



**MAYFRAN - USA**  
Cleveland Ohio

**MAYFRAN-EUROPE**  
Landgraaf, The Netherlands



**TSUBAKIMOTO MAYFRAN**  
Japan



provide a world-wide and interchangeable pool of experience for your specific needs.





**Mayfran International  
(America)**

P.O. Box 43038  
Cleveland, OH 44143 U.S.A.

Tel.: 1-216-461-4100  
Fax: 1-216-461-5565

**Mayfran International**, 370 East 12 Mile Road  
Madison Hts., MI 48071 U.S.A.  
Tel.: 1-313-399-9850, Fax: 1-313-399-9891

**Mayfran International B.V.  
(Europe)**

P.B. 31032, Edisonstraat 7  
NL-6370 AA Landgraaf/The Netherlands

Tel.: 31-45-329292  
Fax: 31-45-329300

**Mayfran U.K. Ltd.**, Blundell House  
Torrington Avenue, GB-Coventry CV4 9GU/UK  
Tel.: 44-203-466281, Fax: 44-203-422206

**Mayfran GmbH**, Roermonder Str. 594  
D-52072 Aachen/Germany  
Tel.: 49-241-938720, Fax: 49-241-175080

**Mayfran France S.A.R.L.**, Centre D'Affaires, Paris-Nord  
Immeuble le Bonaparte, F-93153 Le Blanc Mesnil Cedex/France  
Tel.: 33-1-48-65-7800, Fax.: 33-1-48-67-7629

**Tsubakimoto Mayfran  
Inc.,**

5001 Ohno, Tsuchiyama-Cho, Kouga-Gun  
Shiga 528-02/Japan

Tel.: 81-7486-7-1001  
Fax: 81-7486-7-1097

**Mayfran Canada  
Ltd.**

5955 Airport Road, Suite 300  
Mississauga, Ontario, Canada L4V 1R9

Tel.: 1-905-678-0018  
Fax: 1-905-678-0019

**Miven  
Mayfran**

P.O. Box 59 Karwar Road,  
Hubli-580 024/India

Tel.: 91-836-363677  
Fax: 91-836-361265

**Korea  
Mayfran**

72-1, Onsoo-dong  
Kuro-ku 152-120, Seoul/Korea

Tel.: 82-2-611-5886  
Fax: 82-2-684-9166